



# StaffTrac™

Observation, Evaluation, PD & Reporting



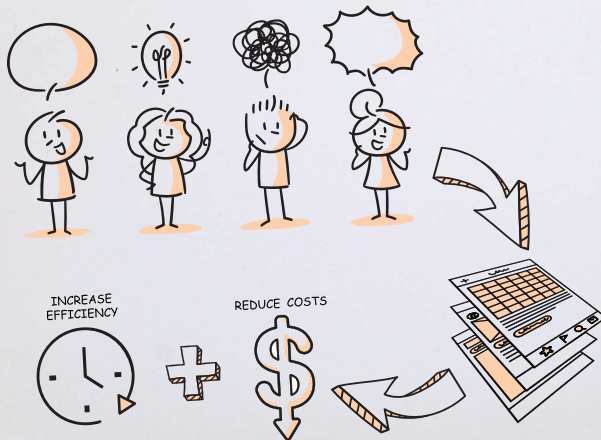
## Teacher/Principal Evaluations Made Easy!

THE MOST COMPREHENSIVE MANAGEMENT SYSTEM AVAILABLE



## The StaffTrac Story

StaffTrac™ was designed from the ground up with the input and insight of education professionals. We listened to your frustrations, challenges and needs regarding the entire Teacher/Principal observation and evaluation process and created a one-of-a-kind, all-inclusive system to save time, workload and effort.



### A SEAMLESS SOLUTION

StaffTrac delivers a complete online solution to help you manage all aspects of the process and is accessible from any tablet, computer or mobile device. There's even an HR module for tracking teacher data and conducting professional development initiatives and events.

## We Feel Your Pain

For years, administrators have grappled with information scattered among hundreds of fields and massive amounts of excellent but inaccessible data.

Implementation Challenges

Managing Several Calendars

Isolated Data

Disconnected Applications

Add-Ons

Information in Hundreds of Fields

That all changes with StaffTrac!

Check out all the features and make a comparison for yourself.



# Let StaffTrac™ Do the Work for You



## One System. Problem Solved.

StaffTrac is your complete teacher/principal evaluation management system, the only one-stop APPR solution that handles all your compliance and reporting needs. Everything from developing and tracking SLO's to one-click reporting at the end of the year.

### Tailored to Your Needs

Use any rubric and customize multiple evaluation components to mirror your school's process. All historical observations are easily imported into StaffTrac, and its ability to be easily configured to your exact specifications is second to none.

**Now  
Includes  
Danielson  
Rubrics**

### Isn't It Time to Upgrade Your School's APPR Management System?

- Local New York-based Compar
- On the WYNRIC Contract
- Rights to All Danielson Rubrics
- Complete APPR Management System
- One-button Upload to NYSED
- Work in Multiple Years Simultaneously



### The Only One of Its Kind

Unlike other systems where you struggle with isolated and disconnected programs, StaffTrac manages everything from one source without add-ons of any kind. It's simply the best, most advanced evaluation and management solution in the industry.



**Improve Teaching  
Enhance Learning**

# In a Class All Its Own

No other APPR Management System can match the features and capabilities of StaffTrac.

## Features



### SECURITY, USER MANAGEMENT & STORAGE

- Web-Based SSL Security and Ed Law2d Compliance
- User Accounts for Teachers, Principals, Independent Evaluators and Superintendents
- Supports Multiple Types of Single Sign-On
- Auto Saves As You Go - Never Lose Your Work
- Stores All Historical Records and Events in Real Time

### UNRIVALED USABILITY

- Comprehensive Scheduling that Auto-Updates Teacher and Observer's Local Calendars
- Customize Events by Position Types
- Upload Observer List
- Keep Multiple Years Open – Finalize Last Year while Doing Observations in the Current Year
- Manage and Maintain SLOs and Calculate Scores as Required for APPR
- Compiles Composite Scores (Total Points)
- Allows for Improvement Plan Development (TIP, PIP)
- Manages all Aspects of Professional Development (PD)

### REPORTING

- Comprehensive List of Standard Reports Included (Exportable)
- One-Button Upload to NYSED

### CONVENIENT INTEGRATIONS

- Links to Program Data Systems
- Links to VADIR and Discipline Data Systems
- Links to Any Student Information System (SIS)
- Links to Any Assessment Data System - NYS and Local Assessments
- Links to Online Assessment Process
- Links to and Functions as a Human Resource System (HR)



*I have worked with Educational Vistas for many years and have found their staff to be well informed of best and current practices. Their solutions help school districts operationalize current mandates facilitating our ability to implement evolving APPR Regulations to include data analysis and the observation process. What is more, Educational Vistas synthesizes customer feedback and uses the information to improve their applications.*



**ASSISTANT SUPERINTENDENT FOR CURRICULUM,  
INSTRUCTION, & PUPIL PERSONNEL SERVICES**





# Getting Started

The Educational Vistas Team has worked with hundreds of school districts to implement our industry-leading tools and systems. We have a proven track record of success and understand the importance of a smooth, efficient, zero-impact transition to your new StaffTrac APPR Management System.

Our developers have created sophisticated sync and form-building tools to assist us in connecting to your data – regardless of the source – efficiently and seamlessly. Let's get started by setting up a Webex or in-district product demonstration to explore StaffTrac and further discuss our "Zero-Impact Implementation Plan."

**REQUEST A DEMO**  
**1.888.999.2554**

## Comprehensive Scheduling that Auto-Updates all Parties



StaffTrac  
Observation, Evaluation, PD & Reporting



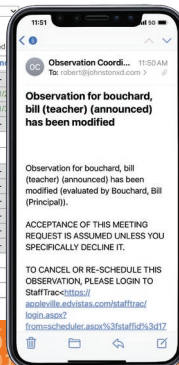
SCHOOL NAME

Home | Calendar | Evaluations | PD | LR | GH | Appeals | Staff Info | Reports | Feedback | Prefs | Logout

Year: 2020-21 | School: Bellevue Elementary School | Position Type: All  
Enable moving observations between columns (drag items to different column horizontally - must be same person and same type)

View Staff with Evaluator: [No Filter] | Estimated | Past Schedule Date | Scheduled

Faculty	Lead Announced	Lead Unannounced	Independent Announced	Independent Unannounced
Applebee, Alice (Tenured Teacher) Notes	Pre 10/13/20 Lowe Obs 10/19/20 Lowe Post 10/19/20 Lowe D4 10/19/20 Lowe	---	---	---
Butterworth, Beatrice (Unit 10 - Nurse) Notes	Obs 1/29/21 Bailey SR 3/4/21 Bailey	---	---	---
Carlier, Kristen (Tenured Central Office Leaders) (Multiple Schools) Notes	GOALS 12/1/20 Wade BOY Obs MOY 4/23/21 Wade SA 6/25/21 Persampieri EOY 7/31/21 Wade	---	---	---
Durant, Doug (Tenured Unit 8 - Assistants and Monitors) Notes	Pre Obs 3/26/21 Francis Post	---	---	---



See how StaffTrac  
can help overcome  
everything you  
dread about APPR

## Easy, Customizable Scoring – Online/Offline



StaffTrac  
Observation, Evaluation, PD & Reporting



SCHOOL NAME

Home | Calendar | Evaluations | PD | LR | GH | Appeals | Staff Info | Reports | Feedback | Prefs | Logout

Name: Adomi, Clare  
Student Assessment Performance

Printing Options  
View Teacher in DataMate

Pre-Pre - Not Scheduled

Pre-Observation by Stockton, John - 11/9/2021

Observation by Bouchard, Bill (Principal) - 11/11/2021 (Unannounced)

Please click on the appropriate box that best answers each question or statement.

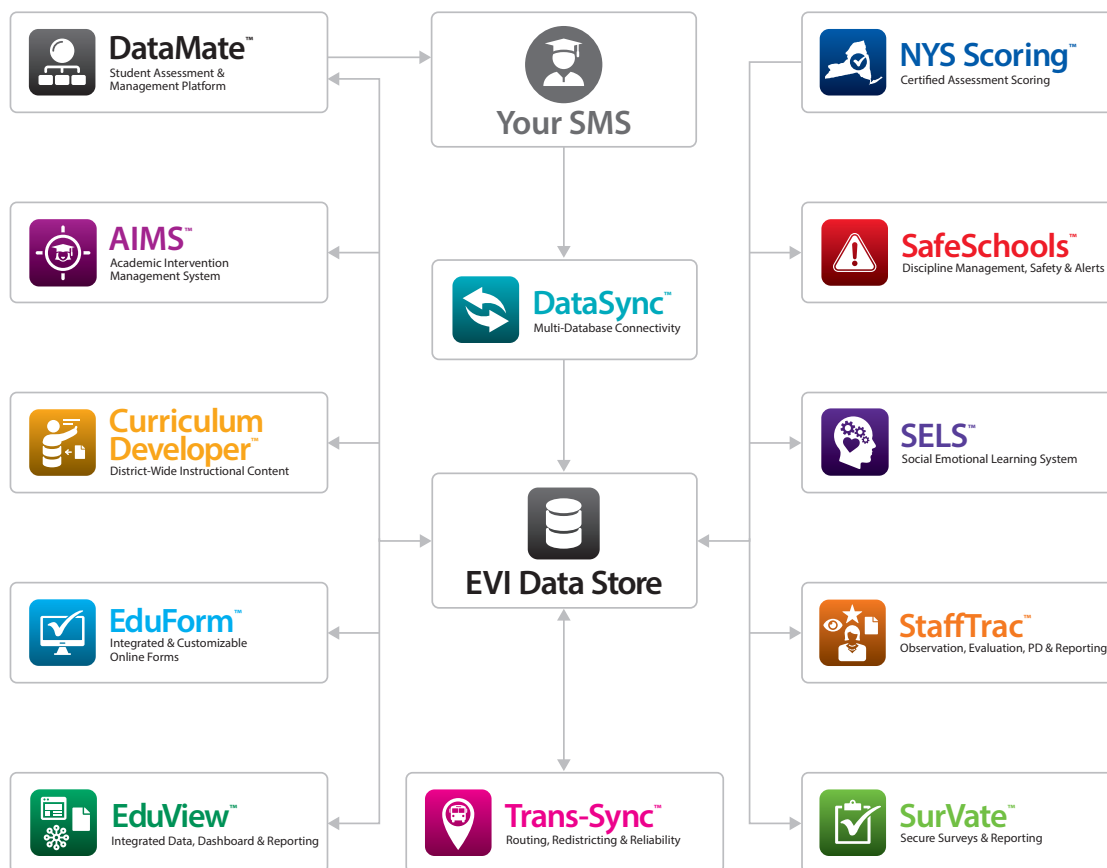
Click here to show the item descriptions | Click here to change rubric item mouse mode to "mouseover to view"

Domain 1: Planning and Preparation

1a: Demonstrating Knowledge of Content and Pedagogy	Ineffective	Developing	Effective	Highly Effective
1b: Demonstrating Knowledge of Students	Ineffective	Developing	Effective	Highly Effective
1c: Setting Instructional Outcomes	Ineffective	Developing	Effective	Highly Effective
1d: Knowledge of Resources	Ineffective	Developing	Effective	Highly Effective



# The World's Most Comprehensive Education Software and Services Company



LEARN MORE OR REQUEST A 15-MINUTE DEMO

**1.888.999.2554**  
**edvistas.com**