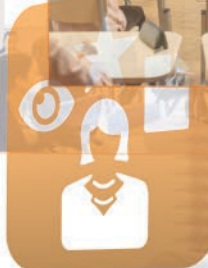




StaffTrac™
 Observation, Evaluation, PD & Reporting



The Most Comprehensive Educator Effectiveness Management System



THE IDEAL SOLUTION FOR WISCONSIN DPI DISTRICTS

The StaffTrac Story

StaffTrac™ was designed from the ground up with the input and insight of education professionals. We listened to your frustrations, challenges and needs regarding the entire Teacher/Principal observation and evaluation process and created a one-of-a-kind, all-inclusive system to save time, workload and effort.



A SEAMLESS SOLUTION

StaffTrac delivers a complete online solution to help you manage all aspects of the process and is accessible from any tablet, computer or mobile device. There's even an HR module for tracking teacher data and conducting professional development initiatives and events.

We Feel Your Pain

For years, administrators have grappled with information scattered among hundreds of fields and massive amounts of excellent but inaccessible data.

Implementation Challenges

Managing Several Calendars

Isolated Data

Disconnected Applications

Add-Ons

Information in Hundreds of Fields

That all changes with StaffTrac!

Check out all the features and make a comparison for yourself.

Let StaffTrac™ Do the Work for You



- ✓ Proven
- ✓ Any Rubric
- ✓ Any SMS
- ✓ Single Sign-On

One System. Problem Solved.

StaffTrac is your complete teacher and principal evaluation management system—the only all-in-one educator effectiveness solution that addresses all your compliance and reporting needs. It handles everything from developing and tracking SLOs to managing evaluations and professional development.

Tailored to Your Needs

Use any rubric and customize multiple evaluation components to mirror your school's process. All historical observations are easily imported into StaffTrac, and its ability to be easily configured to your exact specifications is second to none.

**New EE
2022
Danielson
FFT**

The Only One of Its Kind

Unlike other systems where you struggle with isolated and disconnected programs, StaffTrac manages everything from one source without add-ons of any kind. It's simply the best, most advanced evaluation and management solution in the industry.

Isn't It Time to Upgrade Your School's Evaluation Management System?

- For Principals, Teachers and Any Specialty Positions
- Migrate/Upload All Historical Data
- Rights to All Danielson Rubrics
- Complete Evaluation Management System
- Work in Multiple Years Simultaneously
- National-based Company



**Improve Teaching
Enhance Learning**

In a Class All Its Own

No other Evaluation Management System can match the features and capabilities of StaffTrac.

Features



SECURITY, USER MANAGEMENT & STORAGE

Web-Based SSL Security and Ed Law2d Compliance

User Accounts for Teachers, Principals, Independent Evaluators and Superintendents

Supports Multiple Types of Single Sign-On

Auto Saves As You Go - Never Lose Your Work

Stores All Historical Records and Events in Real Time

UNRIVALED USABILITY

Comprehensive Scheduling that Auto-Updates Teacher and Observer's Local Calendars

Customize Events by Position Types

Upload Observer List

Keep Multiple Years Open – Finalize Last Year while Doing Observations in the Current Year

Manage and Maintain SLOs and Calculate Scores as Required for EEP

Compiles Composite Scores (Total Points)

Allows for Improvement Plan Development

Manages all Aspects of Professional Development (PD)

REPORTING

Comprehensive List of Standard Reports Included

Streamlined, Exportable Reporting

CONVENIENT INTEGRATIONS

Links to Program Data Systems

Links to Discipline Data Systems

Links to Any Student Management System (SMS)

Links to Any Assessment Data System

Links to Online Assessment Process

Links to and Functions as a Human Resource System (HR)



“ I have worked with Educational Vistas for many years and have found their staff to be well informed of best and current practices. Their solutions help school districts operationalize current mandates facilitating our ability to implement evolving APPR Regulations to include data analysis and the observation process. What is more, Educational Vistas synthesizes customer feedback and uses the information to improve their applications. ”

ASSISTANT SUPERINTENDENT FOR CURRICULUM,
INSTRUCTION, & PUPIL PERSONNEL SERVICES

Getting Started

The Educational Vistas Team has worked with hundreds of school districts to implement our industry-leading tools and systems. We have a proven track record of success and understand the importance of a smooth, efficient, zero-impact transition to your new StaffTrac Evaluation Management System.

Our developers have created sophisticated sync and form-building tools to assist us in connecting to your data – regardless of the source – efficiently and seamlessly. Let's get started by setting up a Webex or in-district product demonstration to explore StaffTrac and further discuss our "Zero-Impact Implementation Plan."

REQUEST A DEMO 1.888.999.2554

Comprehensive Scheduling that Auto-Updates all Parties

The screenshot displays the StaffTrac scheduling interface. At the top, it shows the school name and navigation options. Below, there's a table for 'View Staff with Evaluator: No Filter'. The table has columns for Faculty, Lead Announced, Lead Unannounced, Independent Announced, and Independent. Faculty listed include Aguilera, Aliza (Tenured Teacher), Sudsworth, Beatrice (Lead 18 - Nurse), Carter, Kristin (Tenured Central Office Leader), and Durant, Debra (Tenured Lead 4 - Assistant and Mentor). A mobile phone notification is overlaid on the right, stating: 'Observation for bouchard, bill (teacher) (announced) has been modified'. Below the notification, it says: 'OBSERVATION FOR BOUCHARD, BILL (TEACHER) (ANNOUNCED) HAS BEEN MODIFIED (EVALUATED BY BOUCHARD, BILL (PRINCIPAL)). ACCEPTANCE OF THIS MEETING REQUEST IS ASSUMED UNLESS YOU SPECIFICALLY DECLINE IT. TO CANCEL OR RE-SCHEDULE THIS OBSERVATION, PLEASE LOGIN TO STAFFTRAC (https://www.educationalvistas.com/stafftrac/login.aspx?from=scheduler.aspx%3Fstaffid%3D7)'

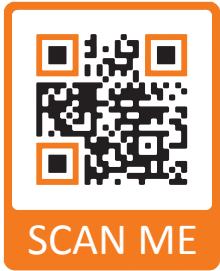
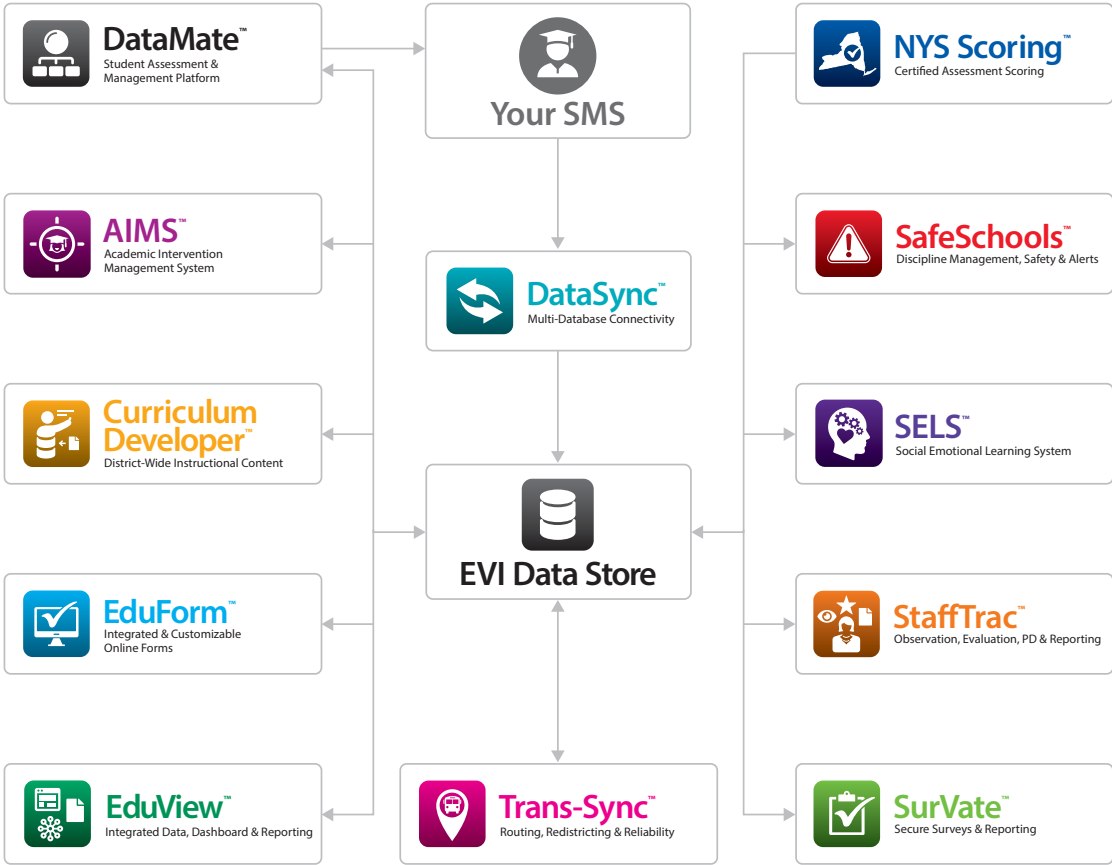
See how StaffTrac can help overcome everything you dread about evaluations

Easy, Customizable Scoring – Online/Offline

The screenshot shows the StaffTrac evaluation scoring interface. It displays the name 'Adomi, Clara' and 'Student Assessment Performance'. There are tabs for 'Pre-Pre - Not Scheduled' and 'Pre-Observation by Stockton, John - 11/9/2021'. A selected observation is 'Observation by Bouchard, Bill (Principal) - 11/11/2021 (Unannounced)'. Below, there's a table for 'Domain 1: Planning and Preparation' with columns for 'Ineffective', 'Developing', 'Effective', and 'Highly Effective'. The table has four rows for different evidence items: '1a: Demonstrating Knowledge of Content and Pedagogy', '1b: Demonstrating Knowledge of Students', '1c: Setting Instructional Outcomes', and '1d: Knowledge of Resources'. The 'Effective' column is highlighted in green for the first three rows.



The World's Most Comprehensive Education Software and Services Company



LEARN MORE OR REQUEST A 15-MINUTE DEMO

1.888.999.2554
edvistas.com