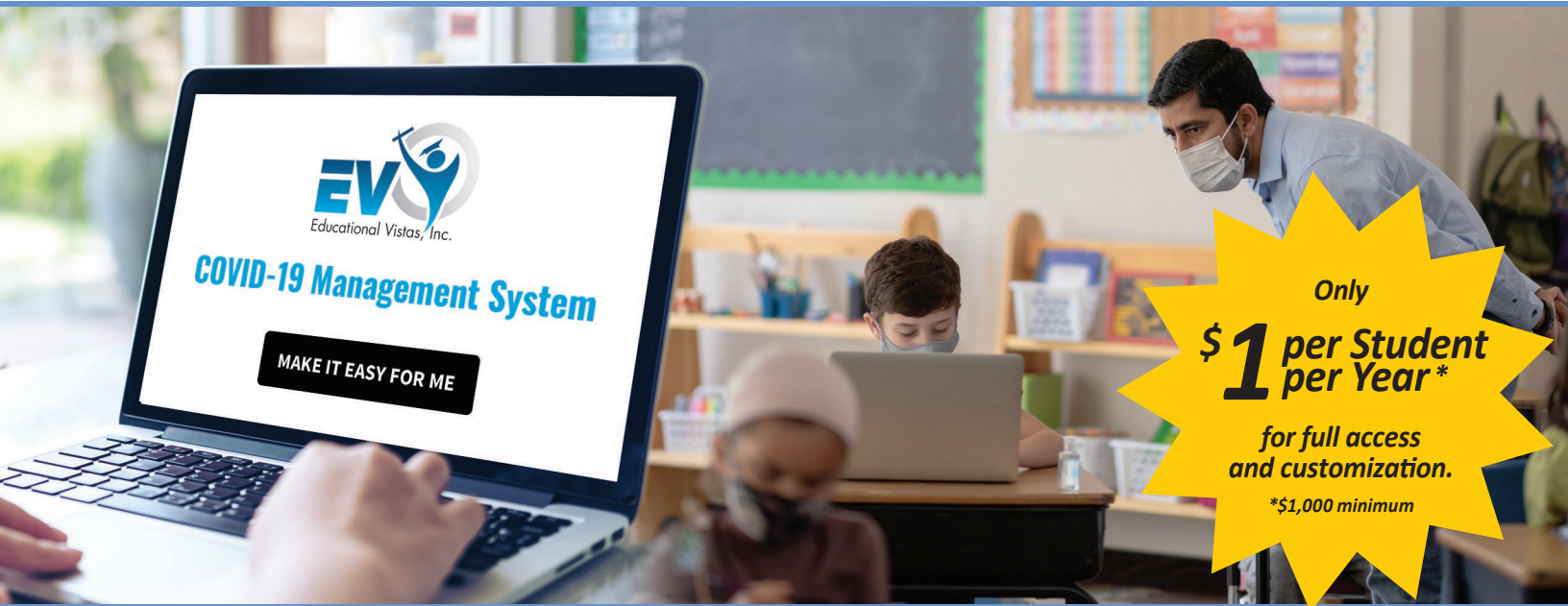


# COVID-19 Management System



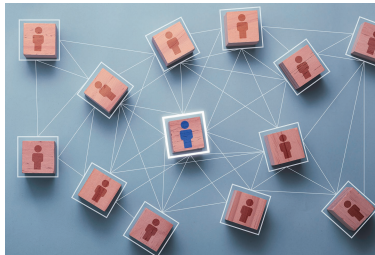
Only  
**\$1** per Student  
per Year\*  
for full access  
and customization.  
\*\$1,000 minimum

## Must-Have Tools to Aid in Keeping Your School Safe

### All COVID-19 and Critical District Digital Forms Included!



Daily Health Questionnaire



Contact Tracing & Parental  
Notification Form



School Reopening Master  
Guidance Plan Form



Remote Classroom  
Instructional Form



Advanced Lunch Needs  
Planning Form



COVID-19 Proof of  
Vaccination & Testing Form

Flip  
For  
More  
Info

Request a personalized demo today. **1.888.999.2554** | [Info@edvistas.com](mailto:Info@edvistas.com)

# COVID-19 Management System



## Daily Health Questionnaire

All Staff and Students/Parents may answer the required questions and submit their responses along with the health status of every individual. Unlimited approval paths allow completed forms to move seamlessly to nurses and administrators as prescribed in your re-opening plan. Green and Red color-coding highlight all submitted forms. Data may be pushed into other district databases. Email notifications and scheduling are included. SMS option is available at additional cost.

## Contact Tracing & Parental Notification Form

Quickly and efficiently contact-trace students or staff members over any date range. By linking to any Student Management System (SMS), all courses, sections, home rooms, and specials scheduling information populate the form to identify all potential contacts. It even displays the numbers of times their schedules coincide within the date range! Bus route data may also be merged if available. Parental contact information is instantly displayed. Email notifications, templates and scheduling are included. Data may be pushed into other district databases. SMS option is available at additional cost.

## School Reopening Master Guidance Plan Form

A powerful organizational interactive form and process to collect all required provisions of your school reopening plan for easy access by all community stakeholders! Includes Health and Safety, Facilities, Nutrition, Transportation, Social-Emotional Well-Being, School Schedules, Budget and Fiscal, Attendance and Chronic Absenteeism, Technology and Connectivity, Teaching and Learning, Special Education, Bilingual Education and World Languages, Staffing and Human Resources, Communication/Family and Community Engagement, Career and Technical Education (CTE), Teacher and Principal Evaluation System (APPR), and Student Teaching areas. All evidence, documents, images, and videos may be shared with the community from any website or printed on demand.

## Remote Classroom Instructional Form

Teachers login using existing district usernames and passwords and instantly see all their students by course/section, homeroom, and/or specials classes. They easily record all materials used and resources provided by individual student or by course and section. Student participation, access to technology, differentiated instructional needs, and parental contact are confirmed and/or detailed for all students. Unlimited note-taking capability allows for important concerns and changes to be documented in real-time.

Reporting provides administrators with statistical analysis and informs AIS/RTI resource allocation.

## Advanced Lunch Needs Planning Form

Our Proprietary DataSync™ module links to any Student Management System (SMS) and displays all students who qualify for breakfast and/or lunch delivery on the days that they are receiving remote instruction at home. Students who request meals may quickly be added to any day's schedule. Additionally, meal sections for each day may be chosen and provided using this form to notify your food preparation staff or out-sourced company in advance for seamless daily scheduling and delivery. A daily menu may be emailed to parents and an op-in/out sub/form may be used.

## Proof of Vaccination & Testing Forms

This form allows staff to upload an image of their vaccination card, screen shot of their Excelsior Pass, or a screen shot of their weekly COVID-19 test results. The Public Health and Health Planning Council passed an Emergency Regulation and the Health Commissioner issued a Determination Letter for COVID-19 Testing for Teachers and other School Employees—with Opt-Out for Vaccinated. This regulation requires all teachers, administrators, and other school employees to submit their weekly COVID-19 test results, unless they show proof of vaccination with either a CDC vaccine card or the Excelsior Pass. This is a condition of employment for most public school staff. Administrators are able to access and review a dashboard of who has been vaccinated, who has not and view the proof of vaccination that was uploaded - links of which are displayed on all reports.

## Access, Customization & Use of All Existing Forms

EduForm™ comes pre-loaded with over 50 additional powerful and efficient educational forms that integrate with your Student Management System (SMS) to provide instant access to well-designed, data-capture instruments. They will dramatically improve existing processes and procedures while providing access to information on-demand! From the best K-Screener with multiple/simultaneous station use and scoring features to the latest CDC COVID-19 incident form.

EVI has 28+ years of experience and proven success in providing the preeminent products and services to over 500 New York school districts!